

# MONTHLY MEMBERSHIP PROGRESS REPORT

District 119

Results as of: 5/31/2024

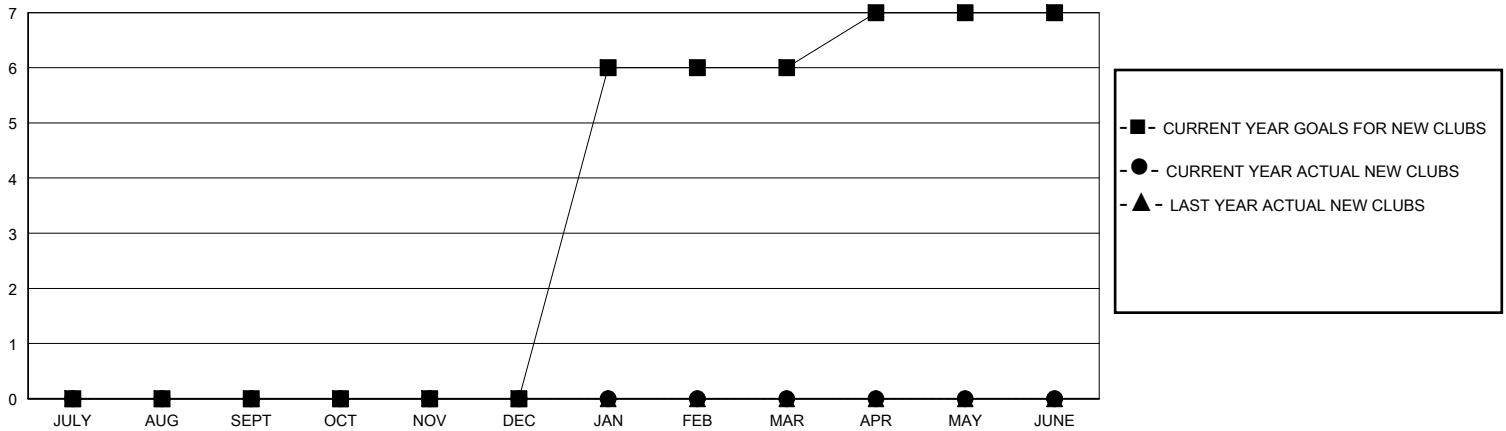
**GMT:**

**LOCATION HUNGARY**

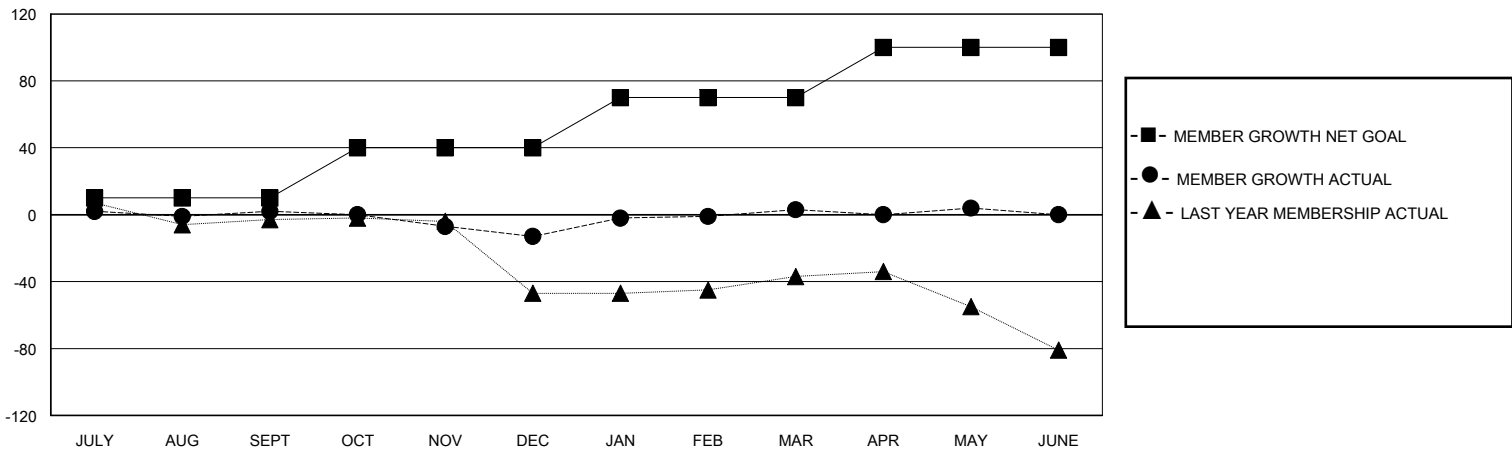
**GMT CA**

Clubs				Members			
RESULTS FOR 2023-2024				RESULTS FOR 2023-2024			
QUARTER	NEW CLUB GOAL	NEW CLUBS	DROPPED CLUBS	QUARTER	MEMBER GROWTH NET GOAL	MEMBER GROWTH ACTUAL	DROPPED MEMBERS ACTUAL (including transfers)
JULY/AUG/SEPT	0	0	0	JULY/AUG/SEPT	10	15	13
OCT/NOV/DEC	0	0	0	OCT/NOV/DEC	30	8	22
JAN/FEB/MAR	6	0	0	JAN/FEB/MAR	30	34	18
APR/MAY/JUNE	1	0	0	APR/MAY/JUNE	30	8	7

**GOALS AND ACTUAL NEW CLUBS CUMULATIVE**



**GOALS AND ACTUAL MEMBERS CUMULATIVE**



DROPPED CLUBS: 0	21 CLUBS OF 38 ADDED 1 OR MORE NEW MEMBERS	<b>GENDER DISTRIBUTION</b> MALE 464 (57.21%) FEMALE 347 (42.79%)
<b>DROPPED MEMBERS</b> DECEASED 5 CLUB CANCELLED 0 OTHER 55 <b>TOTAL 60</b>	<a href="#">CLICK HERE FOR CUMULATIVE MEMBERSHIP DATA</a>	TOTAL FAMILY UNIT MEMBERS 156 FAMILY MEMBERS PAYING HALF DUES 79